



BI: For Users, By Users

Making Sense of Data – Terry Rogers

Agenda

Data World Problems

BI Challenges

Analytics Journey

About SplashBI

- Dashboards
- Reports

Key Differentiators

SplashBI Demonstration

- Ease of Use
- Data Connectivity
- Flexibility
- Field Office / Mobile Support

Recommendations

About the presenter

- Regional Sales Manager, SplashBI
- More than 10 years of industry experience
- Domain Expertise: Reporting, BI, Oracle Discoverer Cloud, ERP
- From Atlanta, Ga, USA



Terry.rogers@splashbi.com

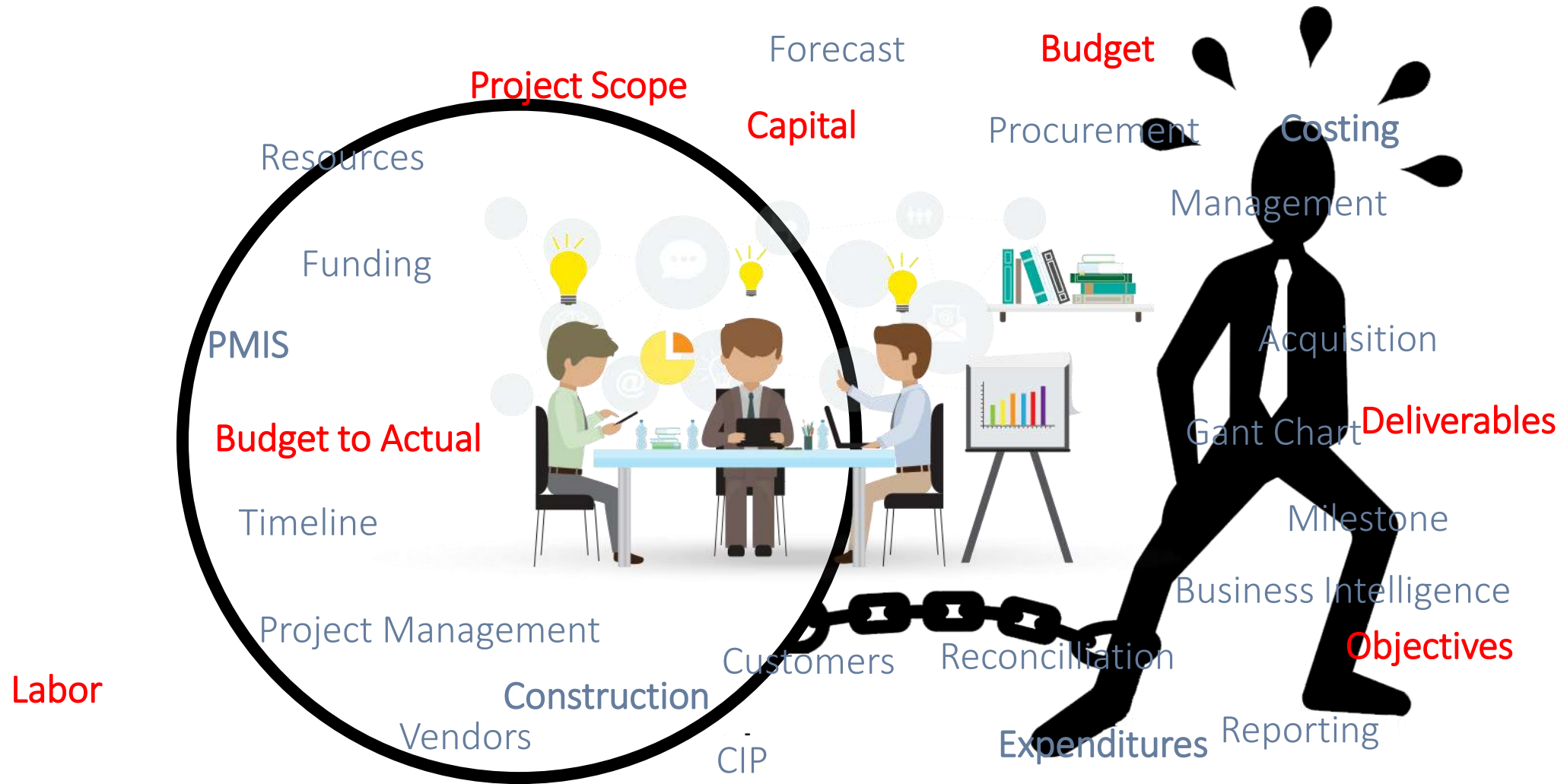


<https://www.linkedin.com/in/terry-rogers>

Abstract

- Making an informed decision comes down to having the right data and analyzing it effectively; in other words, business intelligence and analytics. With good business intelligence, organizations can be efficient, agile, and informed risk takers. Organizations can streamline operations, looking for any areas for cost savings. They can identify and respond to business trends quickly, whether it is for understanding customer behavior or understanding key business metrics to realize new opportunities.

Data World.....



What do these companies have in common?



No cars

The Facebook logo, consisting of the word 'facebook' in white lowercase letters on a blue rectangular background.

facebook

No Content



No Real
Estate

They are all data driven companies

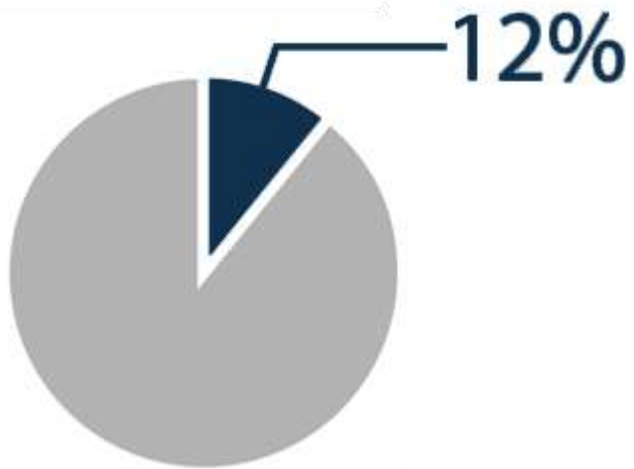
Common BI Challenges

- Incomplete and often untimely data
- Too many data sources
- Lack of a reliable tool to mine and massage data
- Corporate employee populations in different systems
- Inability to use the data effectively to extract patterns and intelligence
- Lack of Data Governance
- No Mobile capabilities

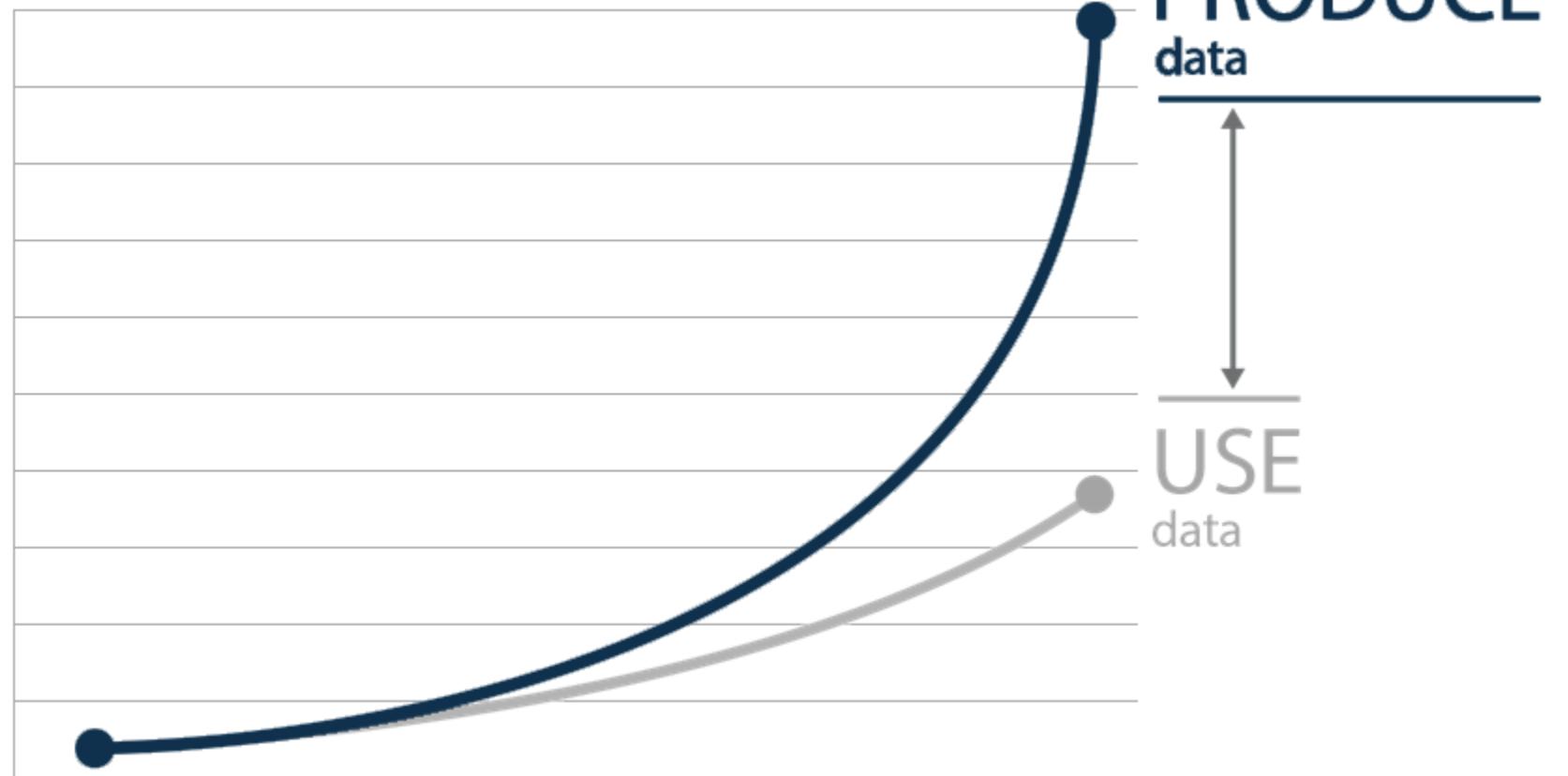


Data Usage

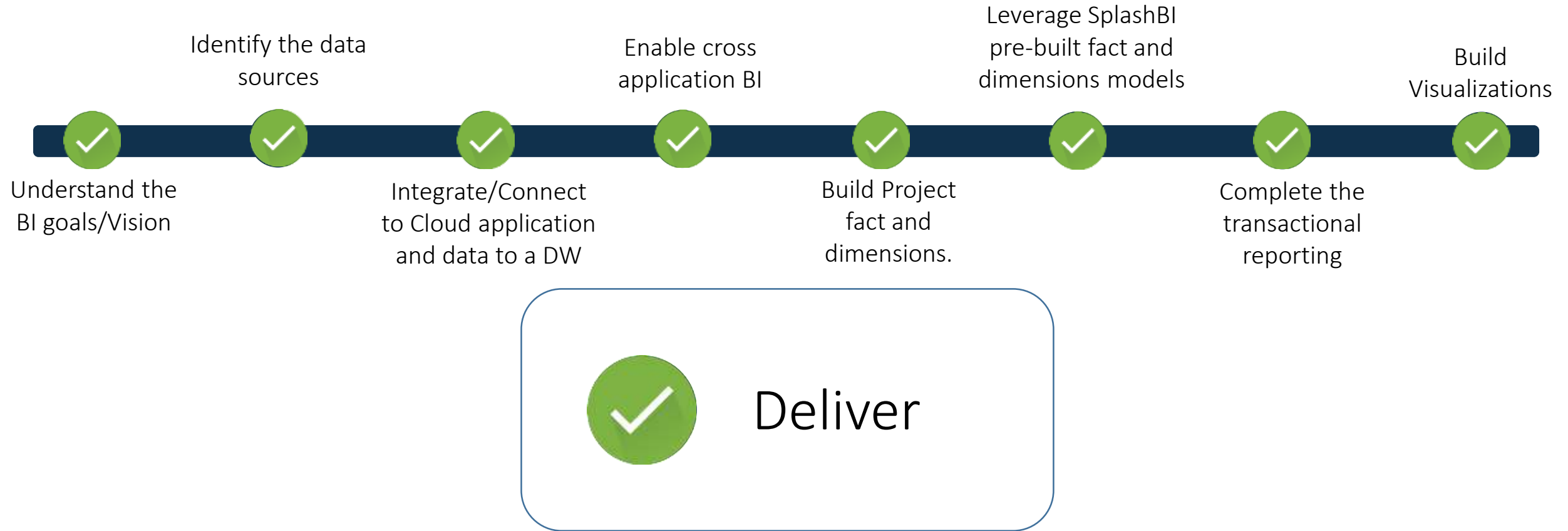
Executives who feel they understand the impact data will have on their organizations



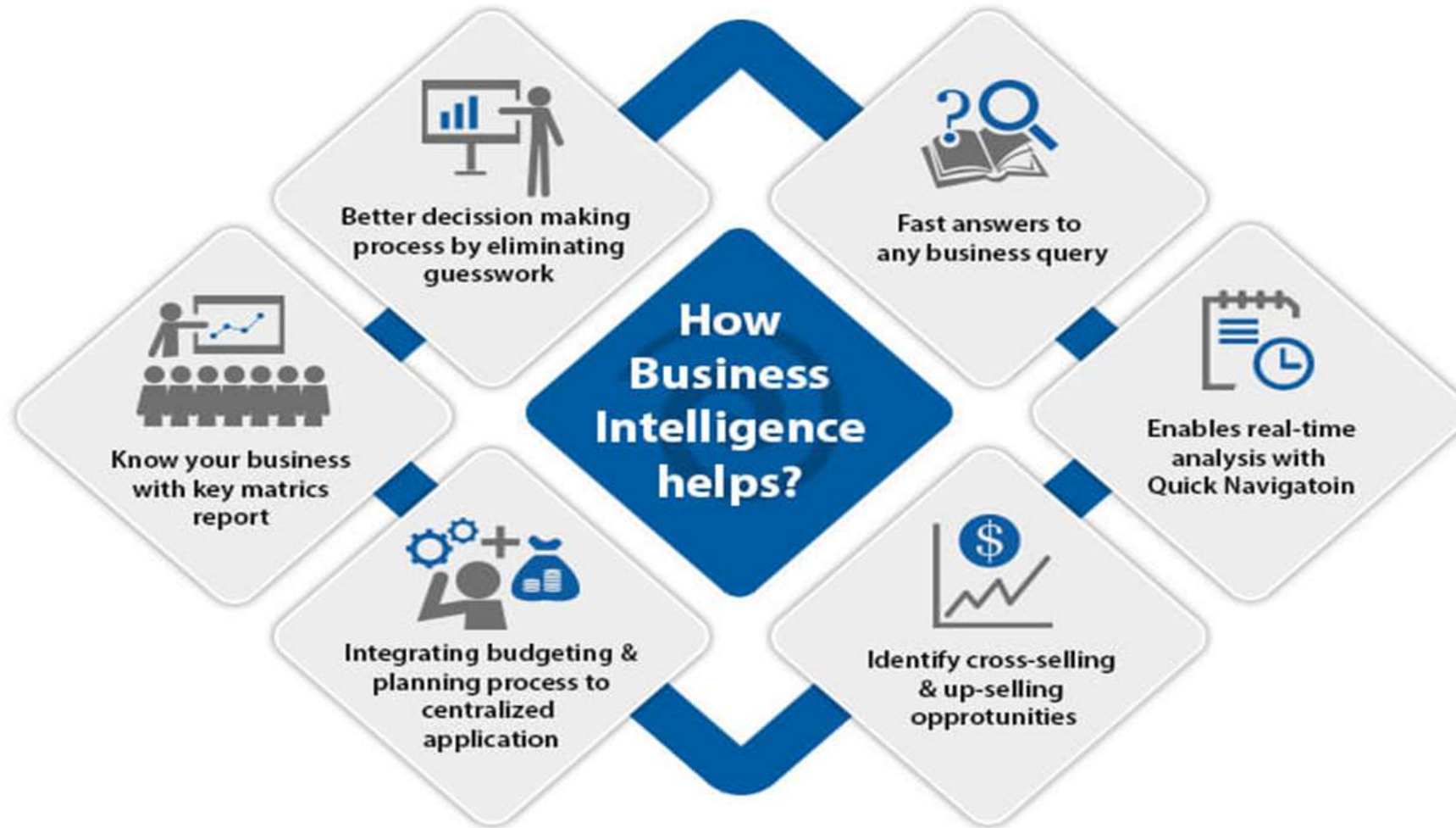
SOURCE



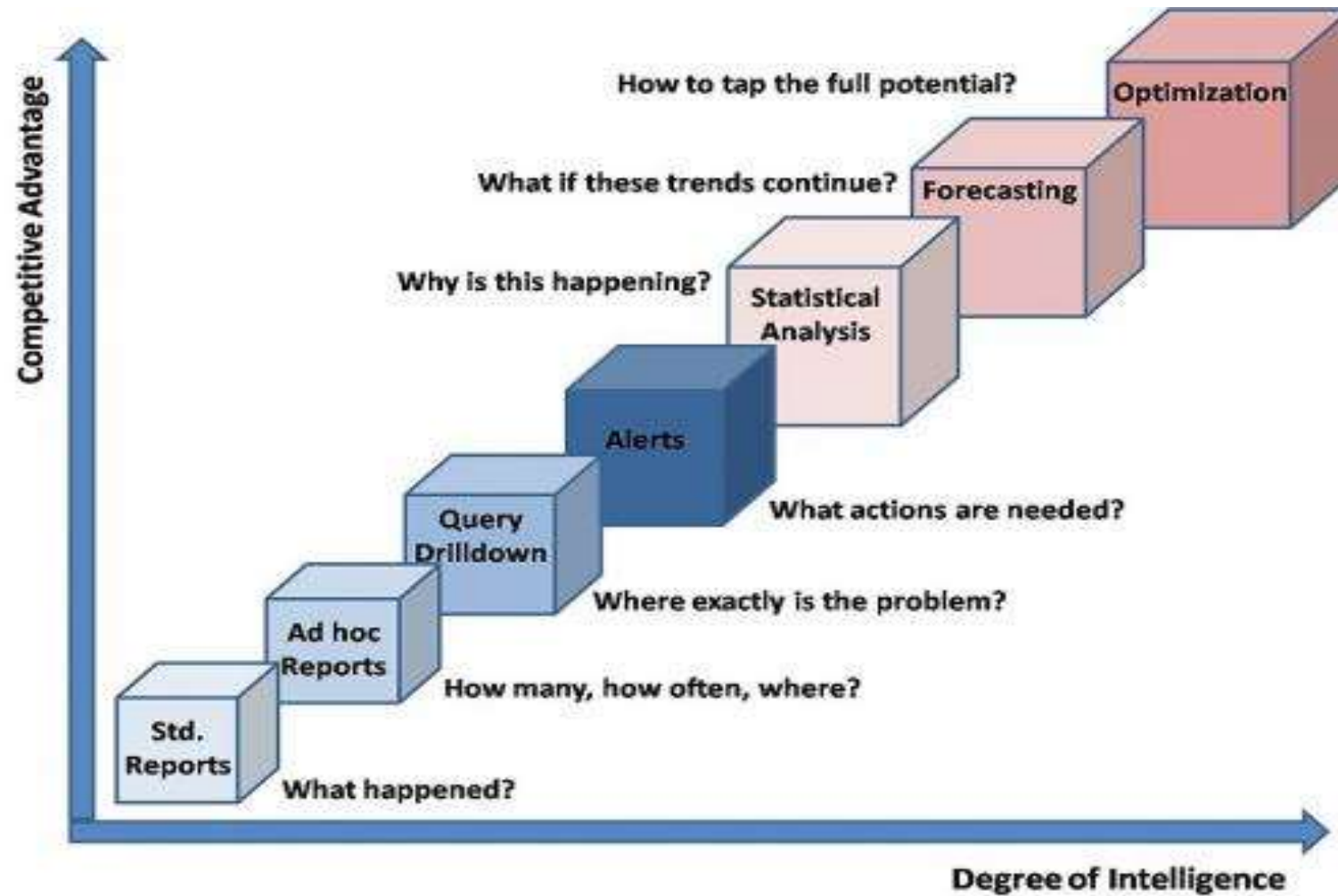
How do you prepare for the BI Journey?



How BI helps drive business insights



What does BI mean to YOU?



Tell your data story with



ORACLE
E-BUSINESS SUITE

ORACLE
HUMAN CAPITAL
MANAGEMENT

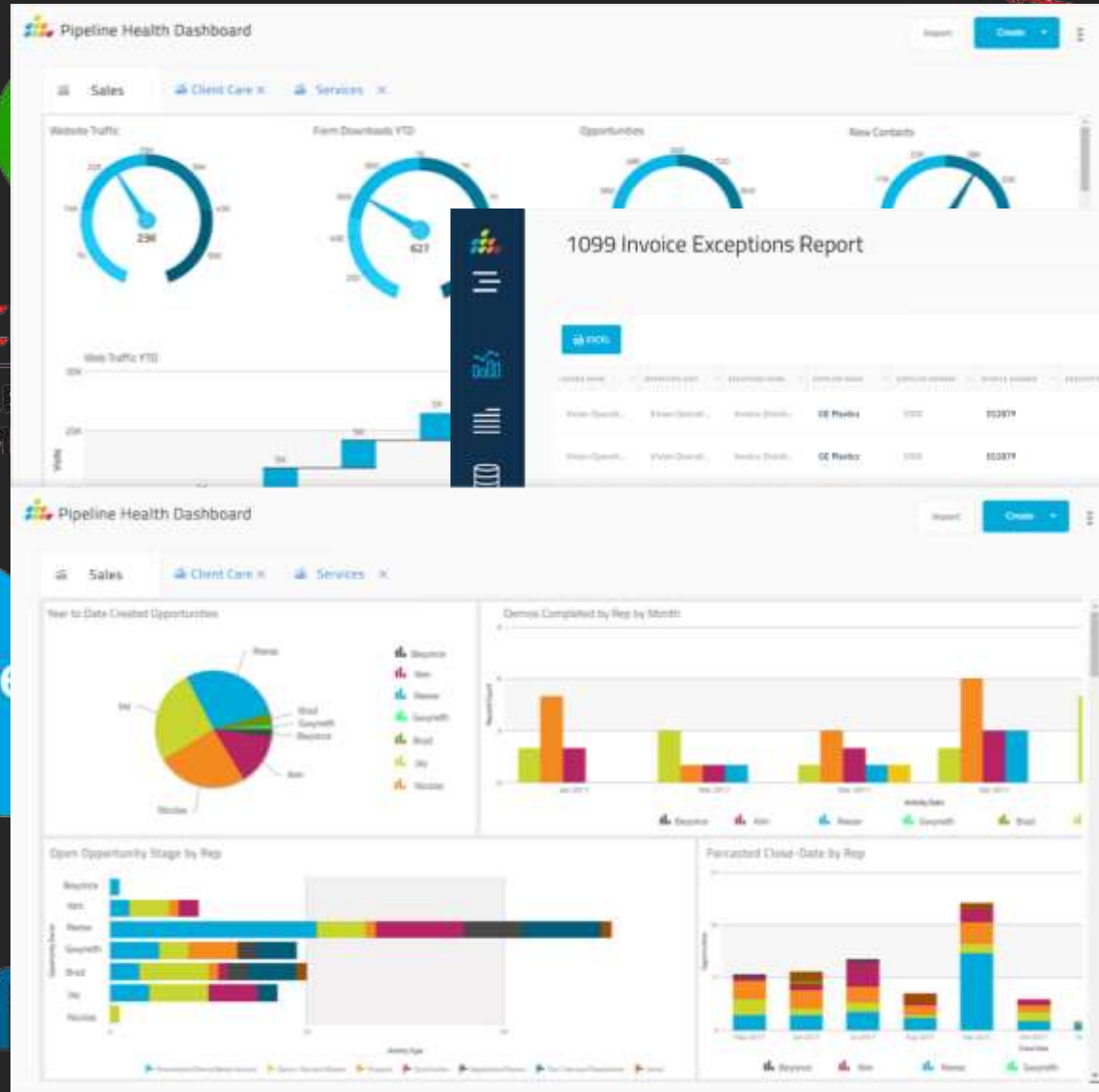
mongoDB

workday

Taleo

salesforce

sales



Google
AdWords
Google Analytics

splashBI

What is splashBI?

Reporting

Self-Service Reporting in the hands of the end users.



Visualizations

Create the perfect story with interactive charts and dashboards.



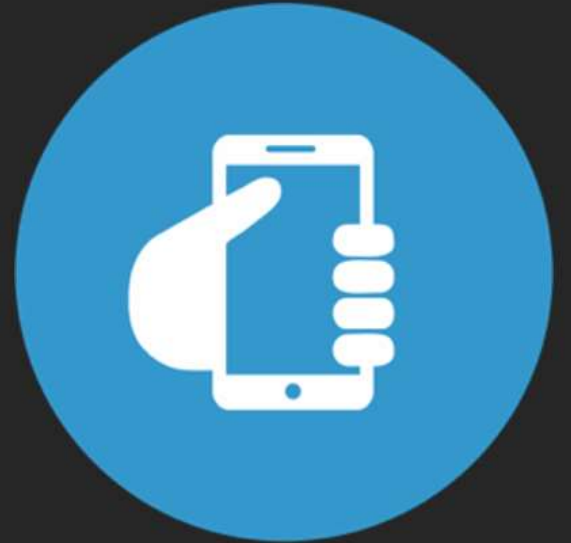
Cross App

Mashup data from multiple systems into an insightful & unified picture.

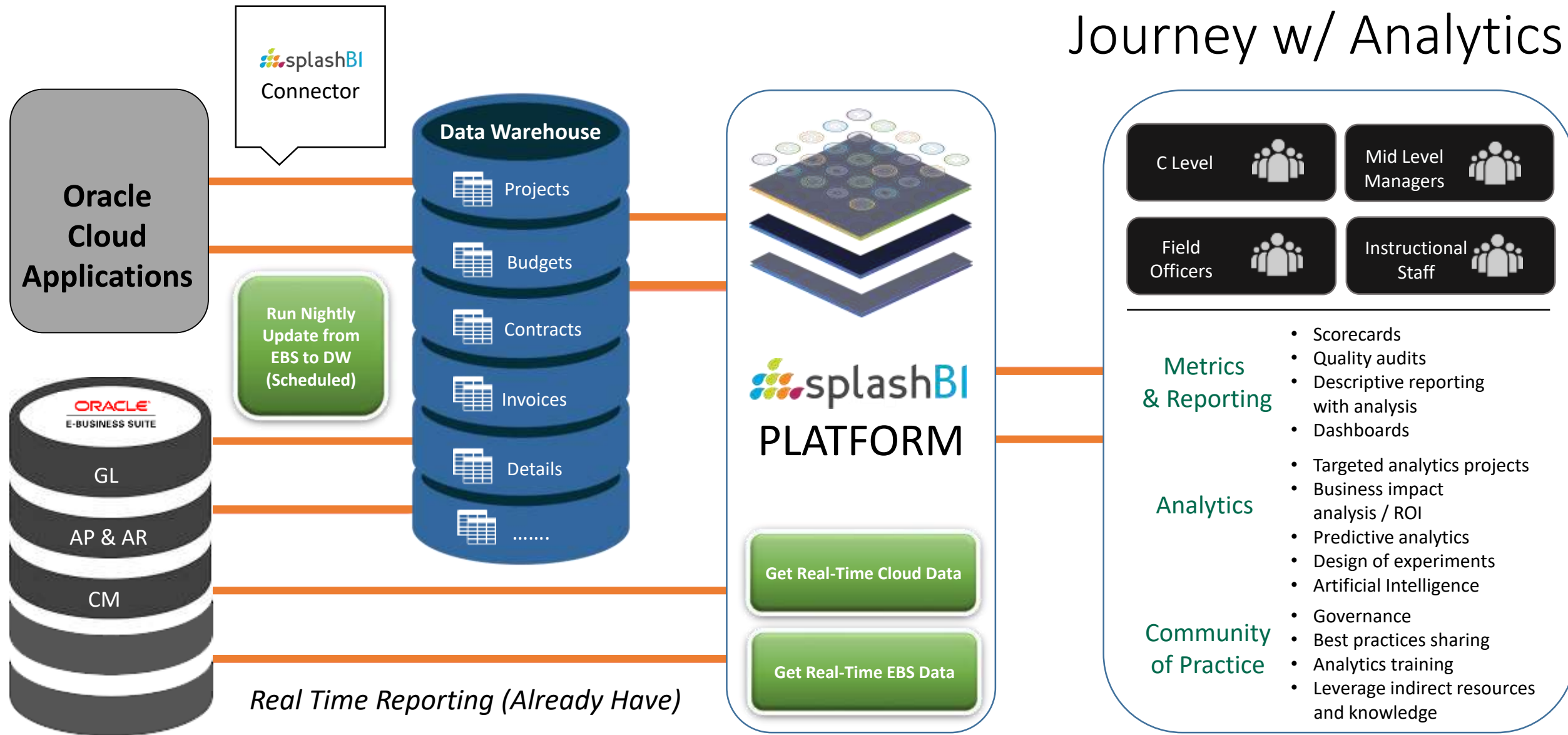


Mobile

Data at your fingertips no matter where you are or what device.



Journey w/ Analytics





ORACLE®
E-BUSINESS SUITE

ORACLE®
PRIMAVERA

ORACLE®
aconex

PROCORE®



On Premise



Mobile



On Cloud



“Customers”

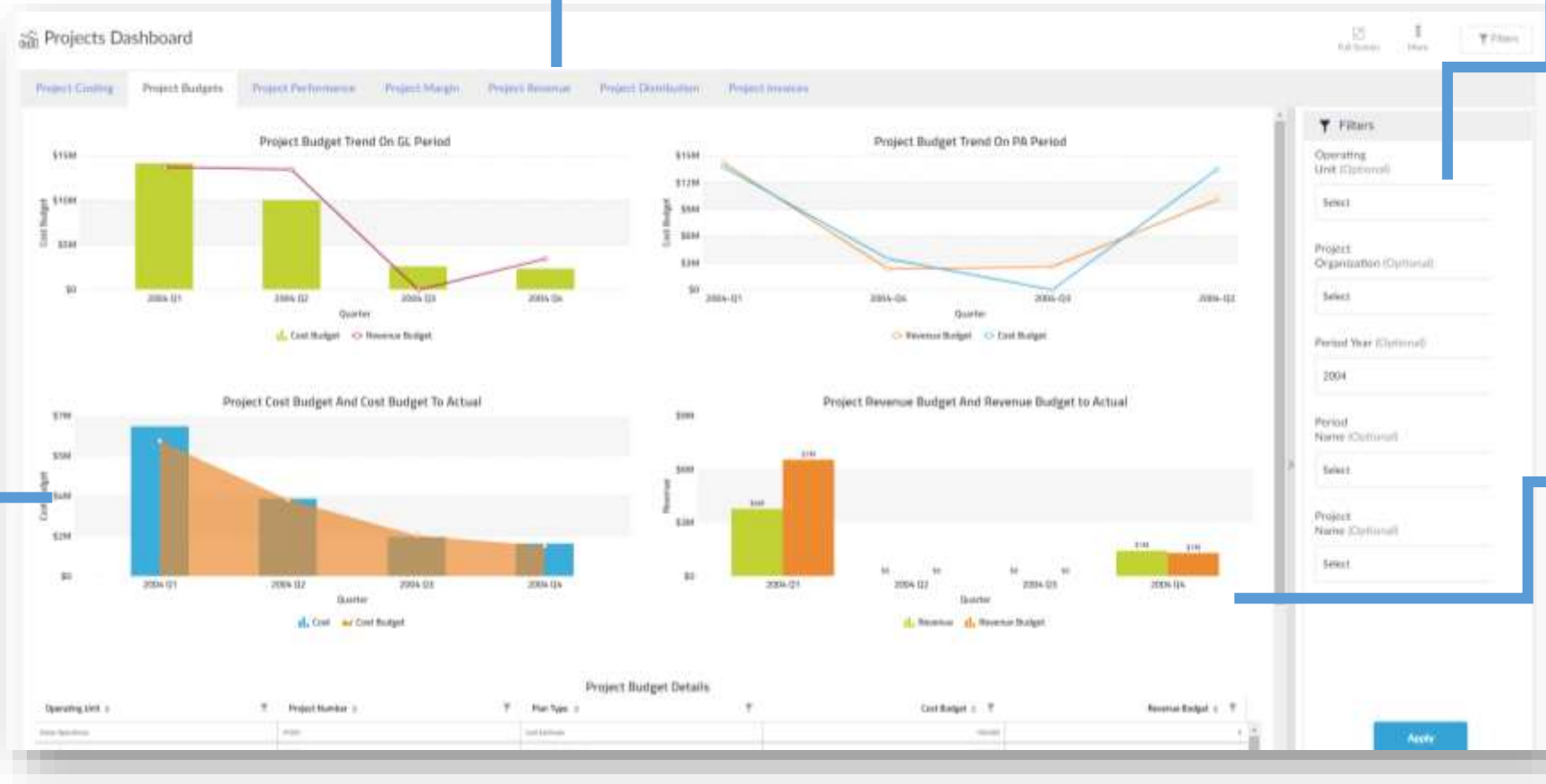
Volume. Velocity. Variety.

splashBI Dashboards

Multi tabular dashboards for better project overview

Filter dashboards on the fly for more specific detail.

More than 100 types of charts and visualizations to best represent your data.



Drilldown to additional dashboards, charts, and reports for deeper details on data points.

Additional Features of Dashboards

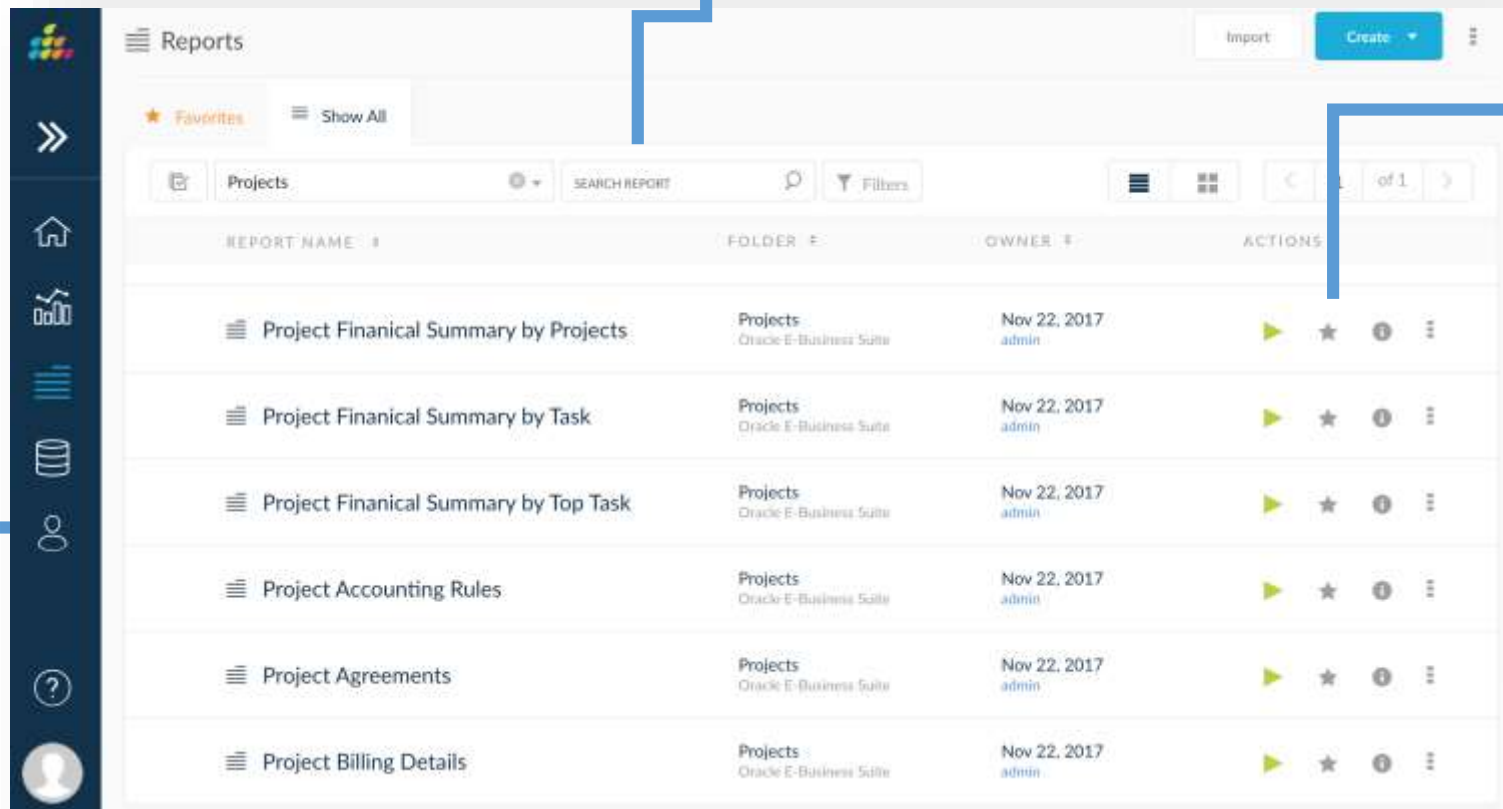
- Customize with your colors and logos/images
- Easily Configurable by the User without technical assistance
- [More than 100 types of visualizations, including KPIs](#)
- Create meaningful scorecards, project summaries, and dashboards
- Mashup data from multiple sources for a more complete picture
- Export Dashboards and Charts in PDF, PPT formats, plus distribution to emails
- Extensive Help Menu throughout the solution

splashBI Reports

Modern UI
tailored to
simplify the end
user experience

Easy to navigate and search for
reports by category or name

Simple to use
menus makes
training simple



The screenshot displays the splashBI Reports interface. On the left is a dark sidebar with a vertical menu of icons. The main content area is titled 'Reports' and includes a search bar, a 'Show All' button, and a 'Create' button. Below these is a table of reports. The table has columns for 'REPORT NAME', 'FOLDER', 'OWNER', and 'ACTIONS'. The reports listed are all under the 'Projects' folder and are owned by 'admin'.

REPORT NAME	FOLDER	OWNER	ACTIONS
Project Financial Summary by Projects	Projects Oracle E-Business Suite	Nov 22, 2017 admin	[Play] [Star] [Info] [More]
Project Financial Summary by Task	Projects Oracle E-Business Suite	Nov 22, 2017 admin	[Play] [Star] [Info] [More]
Project Financial Summary by Top Task	Projects Oracle E-Business Suite	Nov 22, 2017 admin	[Play] [Star] [Info] [More]
Project Accounting Rules	Projects Oracle E-Business Suite	Nov 22, 2017 admin	[Play] [Star] [Info] [More]
Project Agreements	Projects Oracle E-Business Suite	Nov 22, 2017 admin	[Play] [Star] [Info] [More]
Project Billing Details	Projects Oracle E-Business Suite	Nov 22, 2017 admin	[Play] [Star] [Info] [More]

Expandable
menu to allow
report copy,
edit, and more
(without IT
help!)

SplashBI Key Differentiators



Easy to Use



Connectors



Ad-hoc reporting



Drilldowns



Customer's customer
reporting



Distribution



Multi-Tenant – Automation
(content, tenant)



OAuth2 Enabled
APIs, Embed, Integrate



Personalize



100+ Visualizations
D3 integration



Native
Mobile App



Excel Connect



In-memory
Database



Scalability –
Multi-Node



No Desktop
Dependency



Any Browser



Pre-Built Reports &
Dashboards



Pixel Perfect
Reporting



See it in action



Thank You!

www.splashbi.com